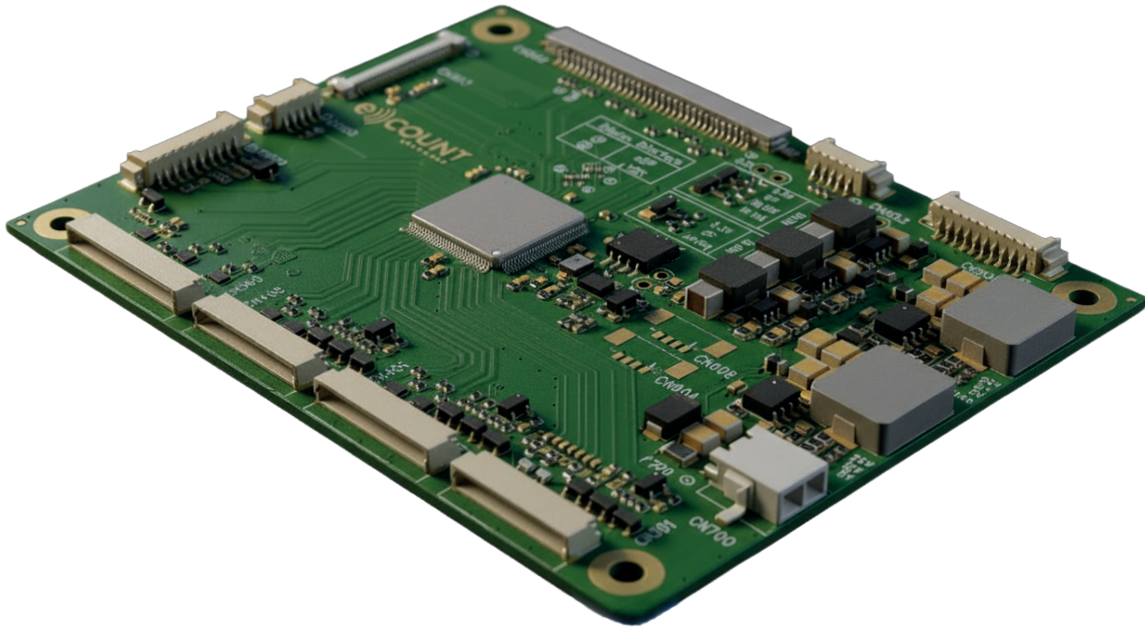


Low-Profile LCD-Controller for LVDS and eDP Displays

## CRTtoLCD-63LP



- Only 6mm high (including PCB)
- Wide-Range Power-Input (5V to 24V)
- Video-Inputs
  - 1x DisplayPort
  - 2x HDMI
  - 1x Analog VGA
- Flexible Display support: 640x480 up to 1920x1200
- Sound-Input/Output: Stereo / Line-Level (Optional)
- Scripting Engine to customize and enhance functionality
- Firmware Update via DVI/HDMI and DisplayPort (SmartISP)
- Fully supports MCCS via DDC/CI
- GPIO's, ADC-Inputs and I<sup>2</sup>C for Add-On sensor modules
- Hour Meter and Temperature Sensor
- Powerful software tools including Timing-Editor, Serial-OSD, Serial-API, Script Compiler and Logo converter

## Low-Profile LCD-Controller for LVDS and eDP

### CRTtoLCD-63LP

#### Description

**CRTtoLCD-63LP** is an LCD-Controller that interfaces standard Analog RGB (VGA), HDMI and DisplayPort sources to an LCD. It is specially designed for low-profile applications.

From a single 5V to 24V power supply, the **CRTtoLCD-63LP** generates all needed supply voltages, display power sequencing as well as power and control signals for Backlight-Driver. PWM and voltage controlled dimming is supported.

Line-Level Stereo-Sound-Output(Optional) can be used to drive active speaker systems. Stereo Sound-Source can be selected from Analog-Input(Line-Level), DisplayPort and HDMI.

With the powerful software tool **Configuration Workbench**, display timing, mode table as well various configuration like customizing OSD menu or implementing own logo can easily be done.

**CRTtoLCD-63LP** has built-in Scripting-Engine that extends functionality without changing firmware. It also applies access to GPIO's, ADC's and I<sup>2</sup>C for external sensor modules.

**SmartISP** let you update Firmware by using digital video input (DisplayPort or HDMI).

All adjusters and parameters are accessible via **Scripting**, **Serial-API** and **DDC/CI**.

#### Typical Verticals

Point of Sales (POS)

Point of Information (POI)

Industrial Automation & Medical

Test & Measurement

Transportation

Gaming Machines

Check-in terminals

Public displays

Panel-PCs, Industrial monitors

Smart displays

Rugged displays

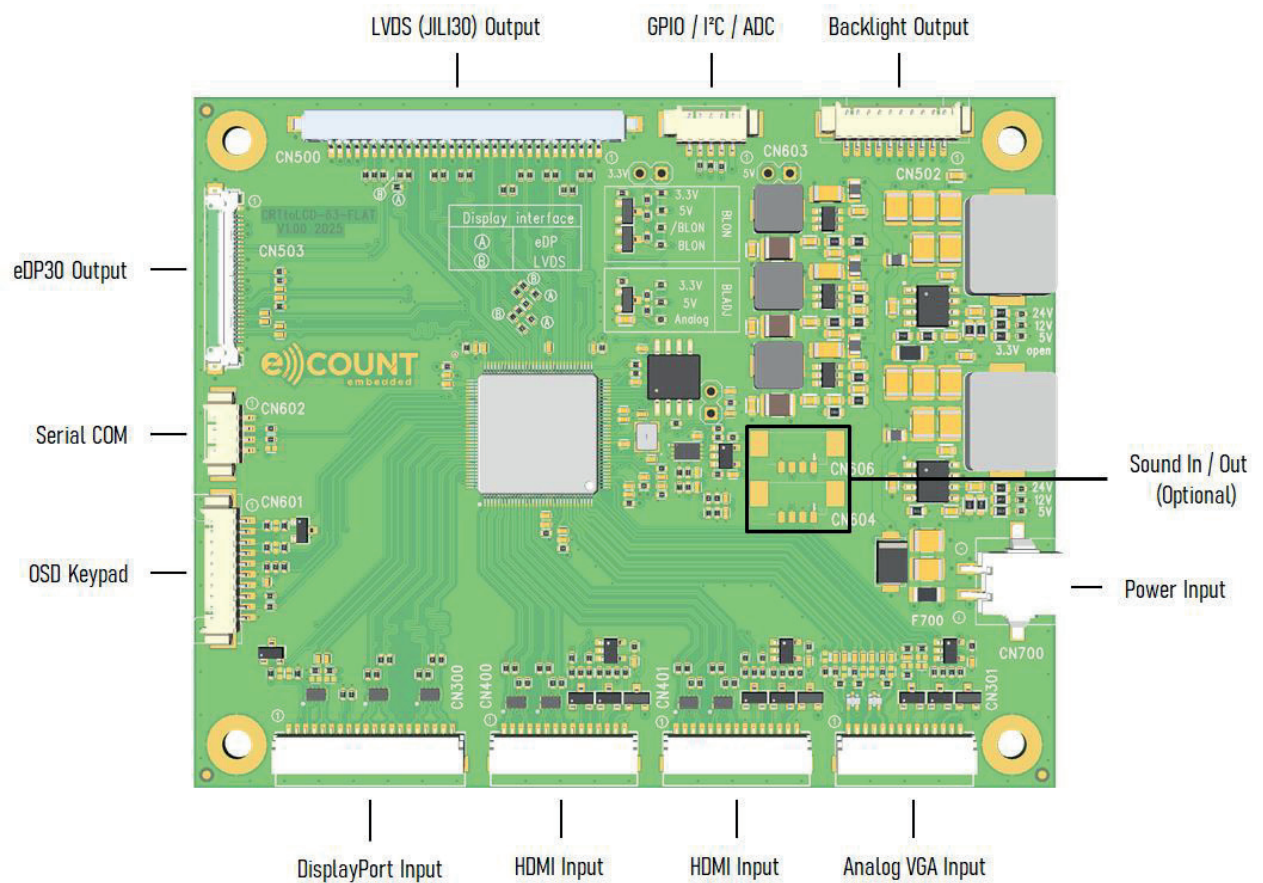
Casino slot machines

Lottery systems

## Low-Profile LCD-Controller for LVDS and eDP

### CRTtoLCD-63LP

#### Functional Overview



## Low-Profile LCD-Controller for LVDS and eDP

### CRTtoLCD-63LP

#### Technical Information

Scaler	MT9700FCFEAG High-quality scaling engine (1:1 / Aspect / Full) Variable sharpness control Peaking & coring functions for sharpness enhancement and noise reduction. Programmable 10-bit gamma correction Support for sRGB and xVCC color space Interlaced inputs supported
HDMI Inputs	Resolution up to 1920x1200@60Hz HDMI 2.0 / DVI 1.0 compliant receiver with HDCP 2.2 Supports HDMI 8/10/12-bit color depth
DisplayPort Input	Resolution up to 1920x1200@60Hz DP1.4 compliant receiver with HDCP1.4 4 lanes (1.6Gbps / 2.7Gbps per lane) 18 and 24-bit color depth
LVDS Output	Resolution up to 1920x1200@60Hz Single/Dual-Channel with 18/24-bit color depth VESA/JEIDA color mapping Swapping of channel polarity, pairs and Odd/Even Display-Power up to 2A
eDP Output	Resolution up to 1920x1200@60Hz 2 lanes (1.6Gbps / 2.7Gbps per lane) Backlight-Power and control Display-Power up to 2A, Backlight-Power up to 2.5A
Sound Input (Stereo) (Optional)	HDMI / DP / Analog (Line Level)
Sound Output (Stereo) (Optional)	Analog (Line Level)
Backlight	Analog or PWM dimming Flexible backlight adjustment by programmable LUT Backlight-Power up to 2.5A Dimming by Ambien Light Sensor(ALS) module
Peripherals	3 configurable multi-purpose IO-Pin's(sharing functions): 2x ADC (8-bit resolution) 3x GPIO 1x I <sup>2</sup> C for sensor modules
OSD	5 Button OSD with customizable keys and function OSD-Menu customizable by software
Specials	On-Board Hour Meter On-Board Temperature Sensor Configuration Workbench for firmware update and configuration Scripting Engine to extend functionality Serial API to provide access to adjusters and data Serial OSD for remote configuration via COM-port Supports MCCS via DDC2B/2Bi/2B+/CI
Power Input	Wide-Range (5V/DC to 24V/DC)
Dimensions of Module	100 mm x 80 mm x 6 mm (L/W/H)

## Low-Profile LCD-Controller for LVDS and eDP

### CRTtoLCD-63LP

#### Ordering Information

CRTtoLCD-63LP	21099E-00-01-01	Low-Profile LCD-Controller for LVDS and eDP displays
OSD-Keypad-5S	22013E-00-01-01	5 button keypad with mechanical switches Multi-color LED (red/green/amber) for status Cable length 300mm Molex PicoBlade 10-Pin (1.25mm pitch)
OSD-Touch-Keypad-5S	22023E-00-01-01	5 button keypad with capacitive touch keys Multi-color LED (red/green/amber) for status I <sup>2</sup> C interface Cable length 300mm Molex PicoBlade 5-Pin (1.25mm pitch)
ADAPT-ALS-VEML7700	60008E-00-01-01	Ambient light sensor module with Vishey VEML7700 I <sup>2</sup> C interface Cable length 300mm Molex PicoBlade 5-Pin (1.25mm pitch)
ADAPT-COM-USB	61023E-00-01-01	USB to UART converter (USB to COM-TTL) Programming adapter for firmware update/configuration USB-Type-A Connector Molex PicoBlade 4-Pin(1.25mm pitch) Cable length 300m
ADAPT-71-LP	22014E-00-01-02	Video Input adapter with 1x CVBS/S-Video ( <i>not supported by CRTtoLCD-63LP</i> ) 2x DVI(supporting HDMI) 1x DisplayPort 1x Analog VGA (Video-Input-Segments can be separated)
KAB-ADAPT-71-LP	61030F	Cable set for ADAPT-71-LP (80mm length)
KAB-ADAPT-P-LP	61030P	Power cable for: CRTtoLCD-63LP CRTtoLCD-71LP HD-SDItoDVI
HD-SDItoDVI	22020E-00-01-01	3G-SDI to DVI/HDMI module for CRTtoLCD-LP series